

CHRIST, THE SURE AND STEADY ANCHOR

(D / E^b / E Major)

Words and Music by Matt Boswell and Matt Papa

Choir arranged by Paul Campbell

PARTS INCLUDED:

Vocal/Rhythm
Vocal, Piano
Choir (SATB), Piano
Choir (SATB)
Piano
Chords & Lyrics

Bonus Part:
Solo Violoncello



getty music

PO Box 120187
Nashville, TN 37212

Christ, the Sure and Steady Anchor

Words and Music by
Matt Boswell and Matt Papa
Choir arranged by Paul Campbell

Steadily ♩ = 69

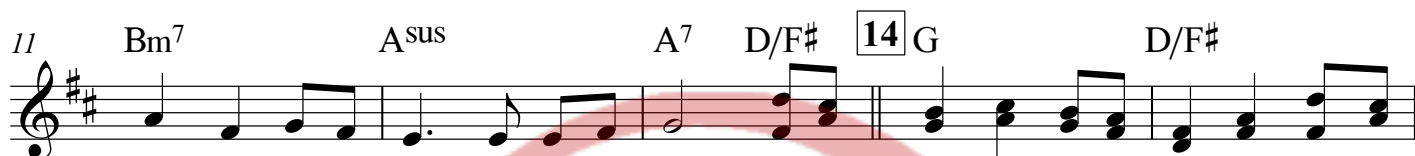
mp Piano (+cello melody), Ac Gtr. light picking



Christ, the



sure and stea-dy an - chor in the fu - ry of the storm; when the winds of doubt blow



through me and my sails have all been torn. In the suf-f'ring, in the sor-row, when my



sink - ing hopes are few, I will hold fast to the an - chor; it shall ne - ver be re -

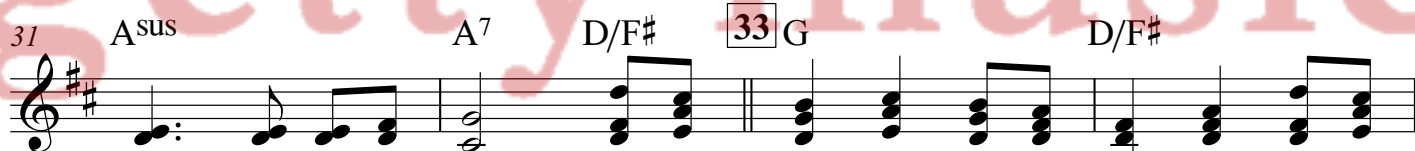


moved.

Christ, the sure and stea-dy



an - chor while the tem - pest ra-ges on; when temp - ta - tion claims the bat - tle and it



seems the night has won. Deep - er still then goes the an - chor, though I

Voice
Piano

www.gettymusic.com

Christ, the Sure and Steady Anchor

Words and Music by
Matt Boswell and Matt Papa
Choir arranged by Paul Campbell

Steadily ♩ = 69

Chord progression: D Bm G

Christ, the

sure and stea-dy an - chor in the fu - ry of the storm; when the winds of doubt blow

through me and my sails have all been torn. In the suf - f'ring, in the sor - row, when my

sink - ing hopes are few, I will hold fast to the an - chor; it shall ne - ver be re -

Chord progression: D G D D Bm7 Asus A7 D/F# 14 G D/F# G G/A A Bm D D/C# Bm7 D/A A

Choir (SATB)
Piano

www.gettymusic.com

Christ, the Sure and Steady Anchor

Words and Music by
Matt Boswell and Matt Papa
Choir arranged by Paul Campbell

Steadily ♩ = 69

mp

Christ, the

mp

D Bm G

mp

6 V.1

sure and stea - dy an - chor in the fu - ry of the storm; when the

D G D

10

winds of doubt blow through me and my sails have all been torn. In the

D Bm⁷ A^{sus} A⁷ D/F[#]

Christ, the Sure and Steady Anchor

Words and Music by
Matt Boswell and Matt Papa
Choir arranged by Paul Campbell

Steadily ♩ = 69
4

V.1

mp

Christ, the sure and steady an-chor in the fu-ry of the

9

storm; when the winds of doubt blow through me and my sails have all been torn. In the

14

suf-f'ring, in the sor-row, when my sink-ing hopes are few, I will hold fast to the

19

L.1

2

an-chor; it shall ne-ver be re-moved.

2

24 **V.2** *mf*

Christ, the sure and stea-dy an-chor while the tem-pest ra-ges on;

mf

when temp-

29 **Altos:** **+Sops:** **33**

and it seems the night has won. Deep-er still then goes the

ta-tion claims the bat-tle

34

an-chor, though I just-ly stand ac-cused; I will hold fast to the an-chor; it shall

39 **L.2** **2** *mp* unis. **V.3**

ne-ver be re-moved. Christ, the sure and stea-dy

2 *mp* unis.

Christ, the Sure and Steady Anchor

Words and Music by
Matt Boswell and Matt Papa
Choir arranged by Paul Campbell

Steadily ♩ = 69

This piano score is for the hymn 'Christ, the Sure and Steady Anchor' in the key of D major (two sharps) and 3/4 time. The tempo is marked 'Steadily' with a quarter note equal to 69 beats per minute. The score is written for piano and includes various dynamics and articulations. A large, semi-transparent red watermark reading 'preview only not for print' is overlaid across the center of the page. The score is divided into five systems, each with a measure number in the left margin. Chord symbols are placed above the staff in the right hand. The first system (measures 1-5) begins with a mezzo-piano (mp) dynamic. The second system (measures 6-10) includes a first ending bracket labeled 'V.1'. The third system (measures 11-15) includes a measure repeat sign at measure 14. The fourth system (measures 16-20) continues the harmonic progression. The fifth system (measures 21-25) includes a first ending bracket labeled 'V.2' and ends with a mezzo-forte (mf) dynamic. The score concludes with a final double bar line.

1 **D** **Bm** **G**

6 **V.1** **D** **G** **D** **D**

11 **Bm⁷** **A^{sus}** **A⁷** **D/F#** **14 G** **D/F#**

16 **G** **G/A** **A** **Bm** **D** **D/C#** **Bm⁷** **D/A** **A**

21 **L.1** **D** **Bm⁷** **G** **V.2** **D**

Christ, the Sure and Steady Anchor

Words and Music by
Matt Boswell and Matt Papa
Choir arranged by Paul Campbell

Steadily ♩ = 69

V.1 7

mp *mp*

14

L.1 **V.2**

21 *mf* *mp*

28 **33**

36 **L.2** *mf*

44 **V.3** **52** 6 *f*

56 **L.3**

Christ, the Sure and Steady Anchor

Words and Music by Matt Boswell and Matt Papa

INTRO:

$\frac{3}{4}$ D | D | Bm | G |

G D
Christ the sure and steady anchor

G D
In the fury of the storm (v.1 only)
D (Bm7)

When the winds of doubt blow through me

Asus A7
And my sails have all been torn
D/F# G D/F#

In the suff'ring in the sorrow
G G/A A Bm

When my sinking hopes are few
D D/C# Bm7

I will hold fast to the anchor
D/A A D | D | Bm7 |
It shall never be re - moved

(As Verse 1)

Christ the sure and steady anchor
While the tempest rages on
When temptation claims the battle
And it seems the night has won
Deeper still then goes the anchor
Though I justly stand accused
I will hold fast to the anchor
It shall never be removed

(As Verse 1)

Christ the sure and steady anchor
Through the floods of unbelief
Hopeless somehow O my soul now
Lift your eyes to Calvary
This my ballast of assurance
See His love forever proved
I will hold fast to the anchor

D | D | Bm7 | G |
It shall never be re - moved

D | D | Bm7 | G

(As Verse 1)

D
Christ the sure and steady anchor
As we face the wave of death
When these trails give way to glory
And we draw our final breath
We will cross that great horizon
Clouds behind and life secured
And the calm will be the better
D
For the storms that we en - dured

TAG:

D/F# G D/F#
Christ the shore of our sal - va - tion
G G/A A Bm
Ever faithful ev - er true
D D/C# Bm7
We will hold fast to the anchor
D/A A D ||
It shall never be re - moved